

BABY MONSTERS EASY TWIN 4

BLACK EDITION

Technical specifications
Suitable from birth up to 22 Kg per seat

Product weight:
Chassis: 6.6 Kg
Complete: 11.5 Kg

Maximum load
47 Kg

Dimensions (L x W x H)
Size unfolded: 92 x 67 x 100 cm
Size folded: 64 x 67 x 22 cm

- Quick and easy one-handed folding, auto folding clip.
- Adjustable micro perforated handlebar.
- Removable individual bumper bar in micro perforated leatherette.
- Adjustable footrest with folding memory.
- 5-point harness.
- One-handed multi-position backrest recline, suitable from birth, padded XL seat for ultimate comfort.
- XL backrest.
- Wheels with bearings for maneuverability and detachable for easy maintenance.
- Lockable and swiveling front wheels (PU).
- Rear wheels of (PU).
- All wheel suspension.
- Flexible multi-position XL canopy, UPF50+, water-repellent, extendable up to 85 cm, build-in mesh ventilation.
- Strong metal rod.
- Spacious and easy accessible grocery basket (Maximum load 5 kg).
- Head ventilation.
- Parent facing seat fabric available separately.

Ref. BLACK CHASSIS: BMT4-10001



11,5Kg



BABY MONSTERS EASY TWIN 4

EASY TWIN 4 HOODS



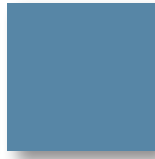
BMT4-0TX
TEXAS



BMT4-001
BLACK



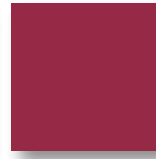
BMT4-012
FOREST



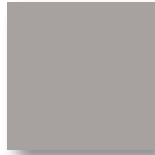
BMT4-F016
ATLANTIC



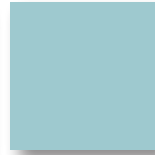
BMT4-F017
MILKSHAKE



BMT4-020
BORDEAUX



BMT4-023
STONE



BMT4-021
AQUA



BMT4-022
NORDIC PINK

EASYTWIN 4 CARRYCOT

Ref: BMT4-20001



COLORS:



BMT4-7TX
TEXAS



BMT4-701
BLACK



BMT4-712
FOREST



BMT4-716
ATLANTIC



BMT4-717
MILKSHAKE



BMT4-720
BORDEAUX



BMT4-723
STONE



BMT4-721
AQUA



BMT4-722
NORDIC PINK

SHOPPING BAG

Ref: BMT4-SB



GROUP 0+ ADAPTERS

Ref: BMT4-6001



EASY TWIN 4 COMBINATIONS



2 SEATS



2 SEATS



1 SEAT + 1 CARRYCOT



2 CARRYCOTS



1 CARRYCOT + SHOPPING BAG



SHOPPING BAG + 1 SEAT



1 SEAT + 1 GROUP 0+



2 GROUP 0+



2 SOFT CARRYCOT